



Each bedroom is air conditioned. Heat, lights and ventilation may be controlled to suit the preference of the occupants. The full length sofa is ideal for daytime naps.

## Double Bedroom

The double bedroom pictured here is shown in both daytime and nighttime arrangements. It contains a wide comfortable sofa which, at night, forms a sleep-inviting bed. The upper berth opens from its niche above the sofa. There is a stationary washstand and a toilet which easily folds into a convenient cabinet. Additional conveniences include ample space for clothing and luggage, cool drinking water, hand towels, mirrors and a locker for shoes which the porter will shine if desired.



Nighttime use of this double bedroom has the sofa converted into a bed and the upper berth moved into place, with the latter equipped with safety guards and a safety ladder to ease access and exit.

Deep carpets and colorful upholstery add to relaxed travel.

Partition between connecting bedrooms can be folded back.





Ideal for group or family travel, connecting bedrooms in the bedroom suite arrangement become one large room when the partition is folded back. A table and folding chairs can be set up for meals or games to be enjoyed in complete privacy and comfort.

Time to retire means time to get a good night's sleep in four comfortable beds in surroundings equal to those found in the best of hotels. You awake in the morning, rested and relaxed, with everything needed to complete your toilet right at hand.





If you're two, or two plus a youngster, you will find the comfort and privacy of this compartment ideal for your travel needs. And, the sofa is always handy for daytime naps.

## Compartments

There's generous living and lounging space in the compartment, whether it's of the type shown on this page or of that shown on the opposite page. In the one to the left, the long deep-cushioned sofa and lounge chair will comfortably seat up to four for daytime travel. At night the sofa gives way to a sleep-inviting bed. There is also an upper berth which levels off above the window, at right angle to the sofa-bed.

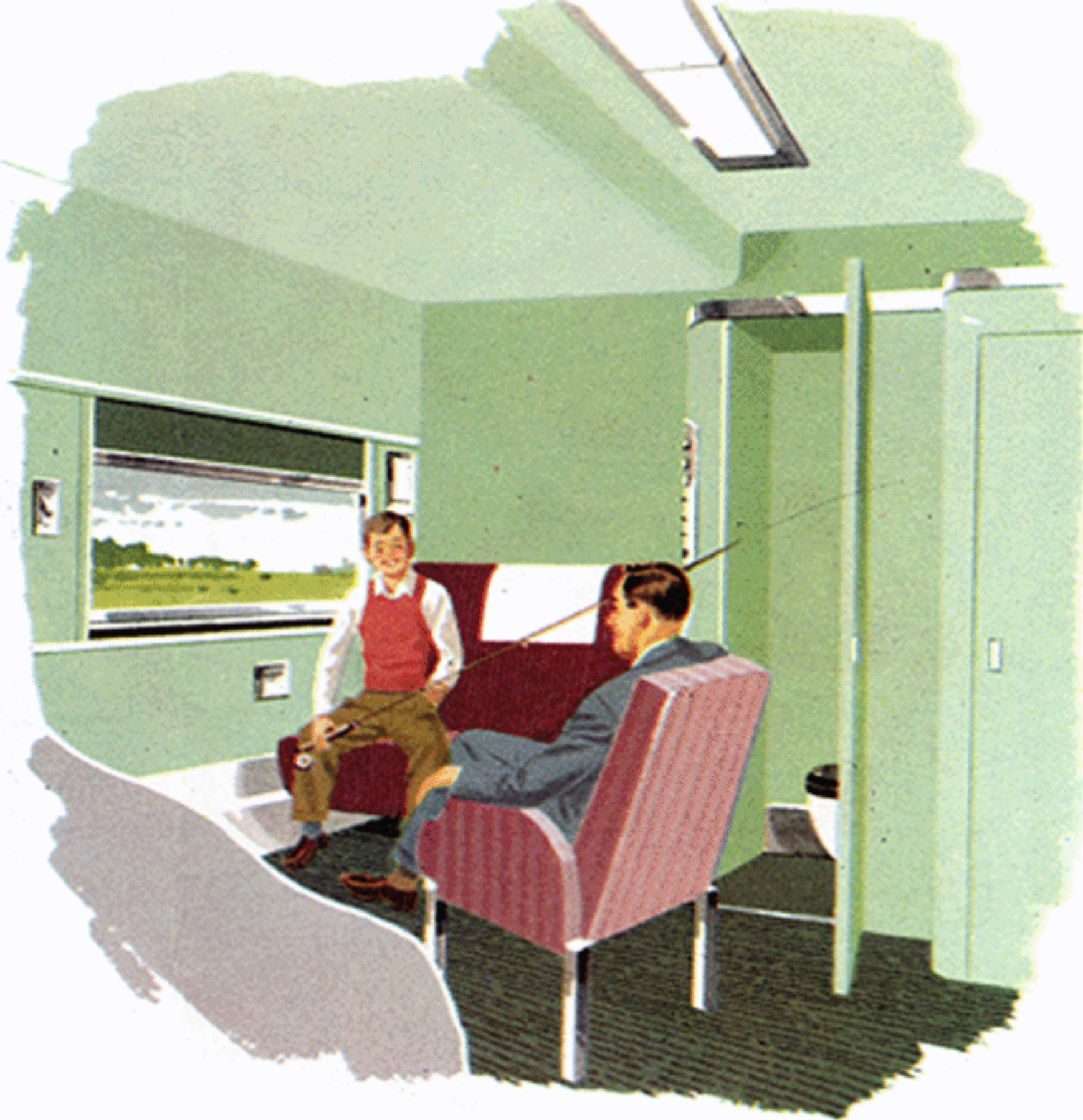


Upper berths are equipped with safety guards.



Other conveniences of this compartment include private toilet and washing facilities, air conditioning, thermostatic control of heat and individual regulation of ventilation and lights.

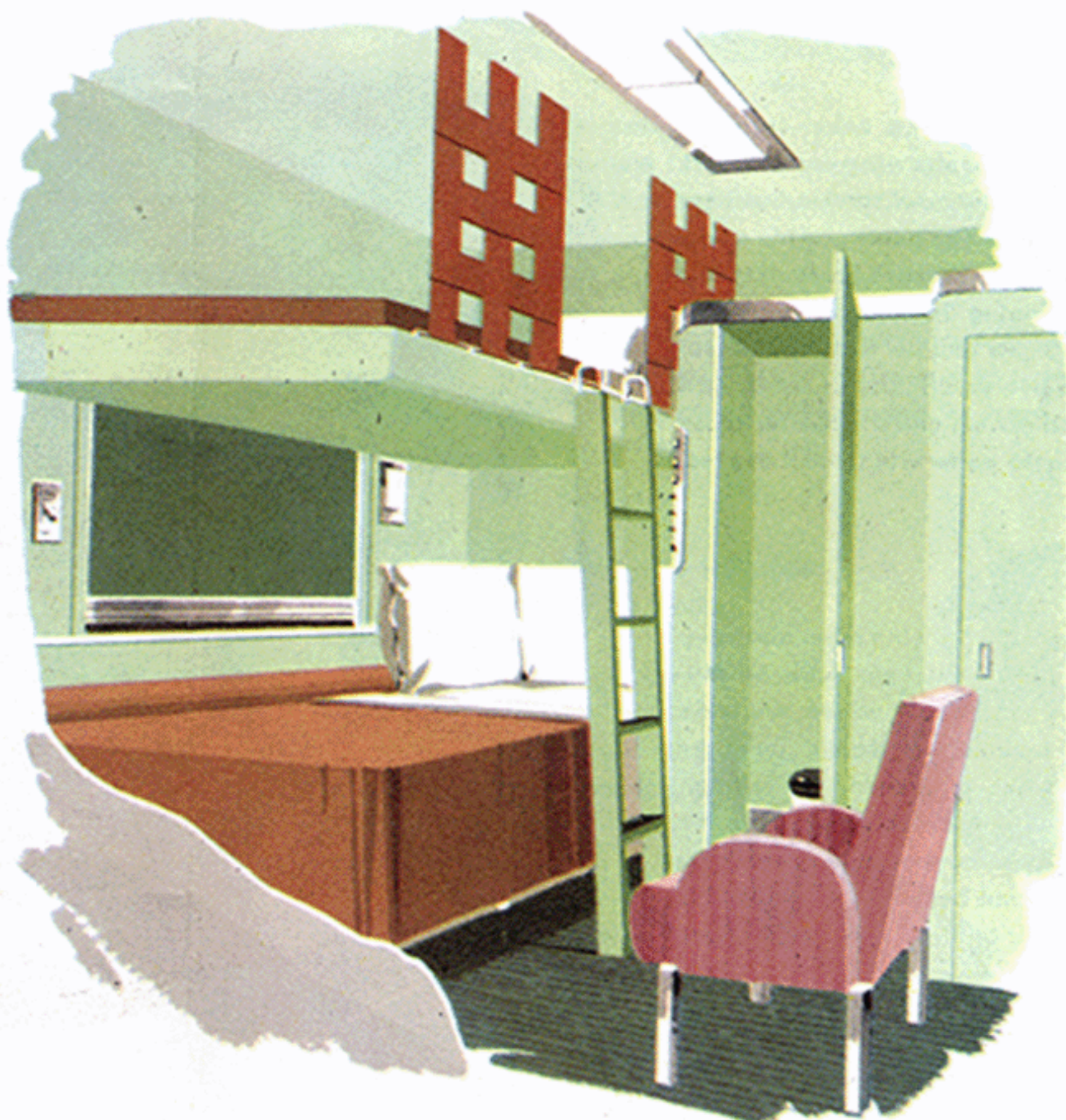
Try a compartment on your next Pullman trip. You will be pleased with its comfortable furnishings and tasteful decorations, also with its exceptionally fine seating arrangement.



In the compartment to the right the two beds are lengthwise of the car. The lower bed is of the fold-in-the-wall type, while the upper berth, directly above, lowers from the ceiling. Both beds feature restful mattresses, fresh crisp linen and soft warm blankets. Complete toilet and wash basin facilities are enclosed in a separate annex. Liberal space is available for the storing of luggage, wraps and other belongings.



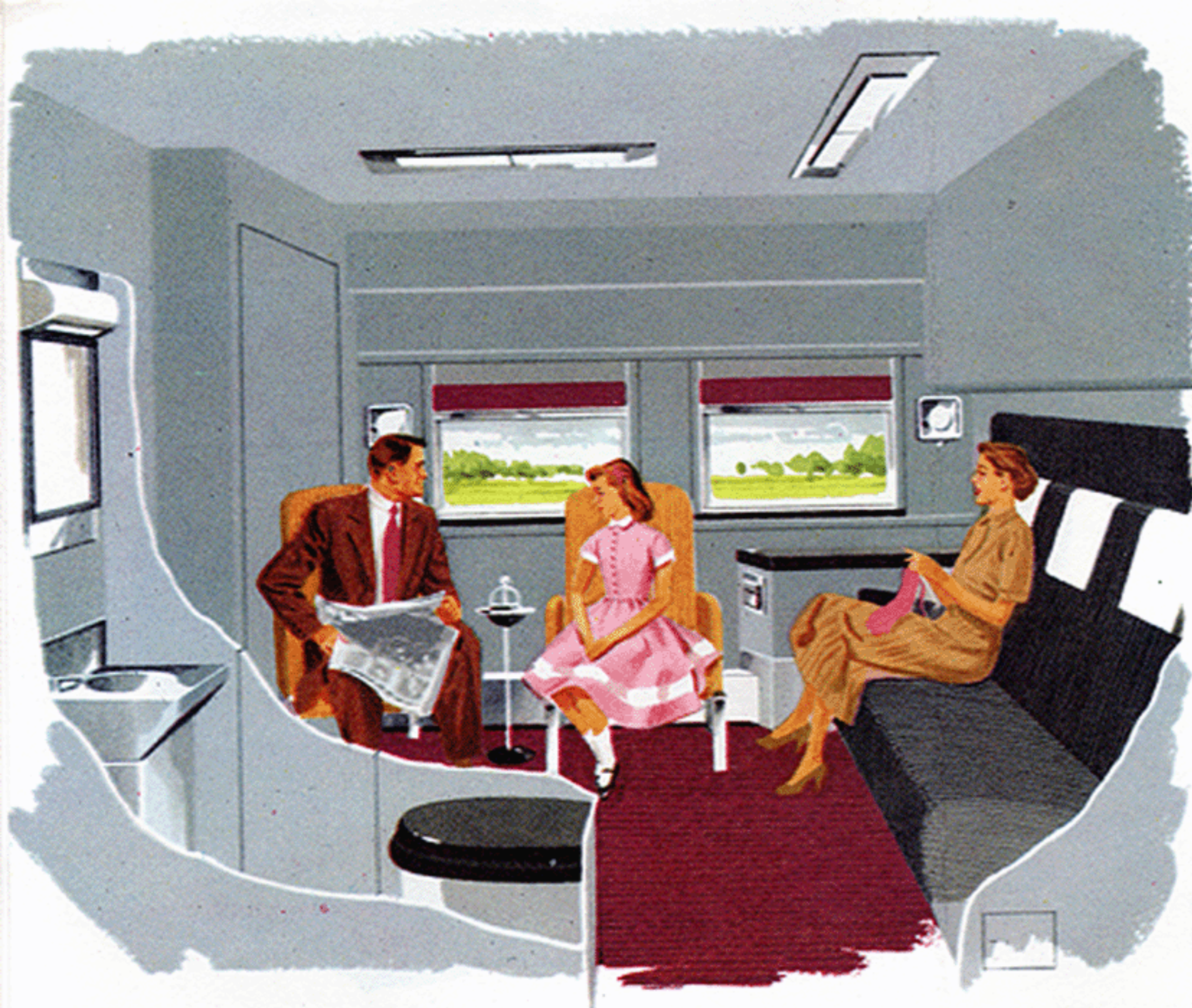
Luggage space is ample for sports equipment.



Even at night with both beds made there is plenty of elbowroom in the compartment. The ladder to the upper berth is firmly affixed and remains in position throughout the night.

# Drawing Room

Complete with every personal need, the drawing room is especially suited for family or group travel. By day it is a spacious living room, with wide sofa, two movable lounge chairs and two large windows. Toilet and washing facilities are completely enclosed in a separate annex. There is a large wardrobe locker for hanging clothes full-length.



Among the many other conveniences of the drawing room are its roominess for meal service, business conferences or games, wide overhead luggage rack, complete air conditioning, individual controls of heat, lights and air flow, cool drinking water, electric shaver outlet, well placed mirrors and a locker for shoes which the porter will shine if desired.

At night the drawing room makes up with three full-length beds, all featuring mattresses which are truly sleep inviting. The lounge chairs are folded and placed under the longitudinal bed which opens from the wall, the transverse sofa converts into a second bed and the third bed is an upper brought down from along one of the cross walls.



# Duplex Single-Room

These private rooms, designed for use by one person, are arranged on two levels, the lower rooms at aisle floor level and the upper rooms three steps above it. Each room has complete toilet facilities, a comfortable lounge sofa with arm rests, ample space for luggage, a folding table for meals or writing, air conditioning and individual controls for heat, air flow and lights.



Communicating doors connect adjoining rooms on the same level and may be opened. Each room has a locker for shoes to be shined by the porter if desired.

At night the roomy sofa becomes a comfortable bed. The toilet facilities are available at all times. There's always plenty of floor space for dressing and undressing.

The folding table is hinged to one of the walls.

A full-length mirror aids in dressing, primping.





Cold drinking water, freshly supplied, is at hand.



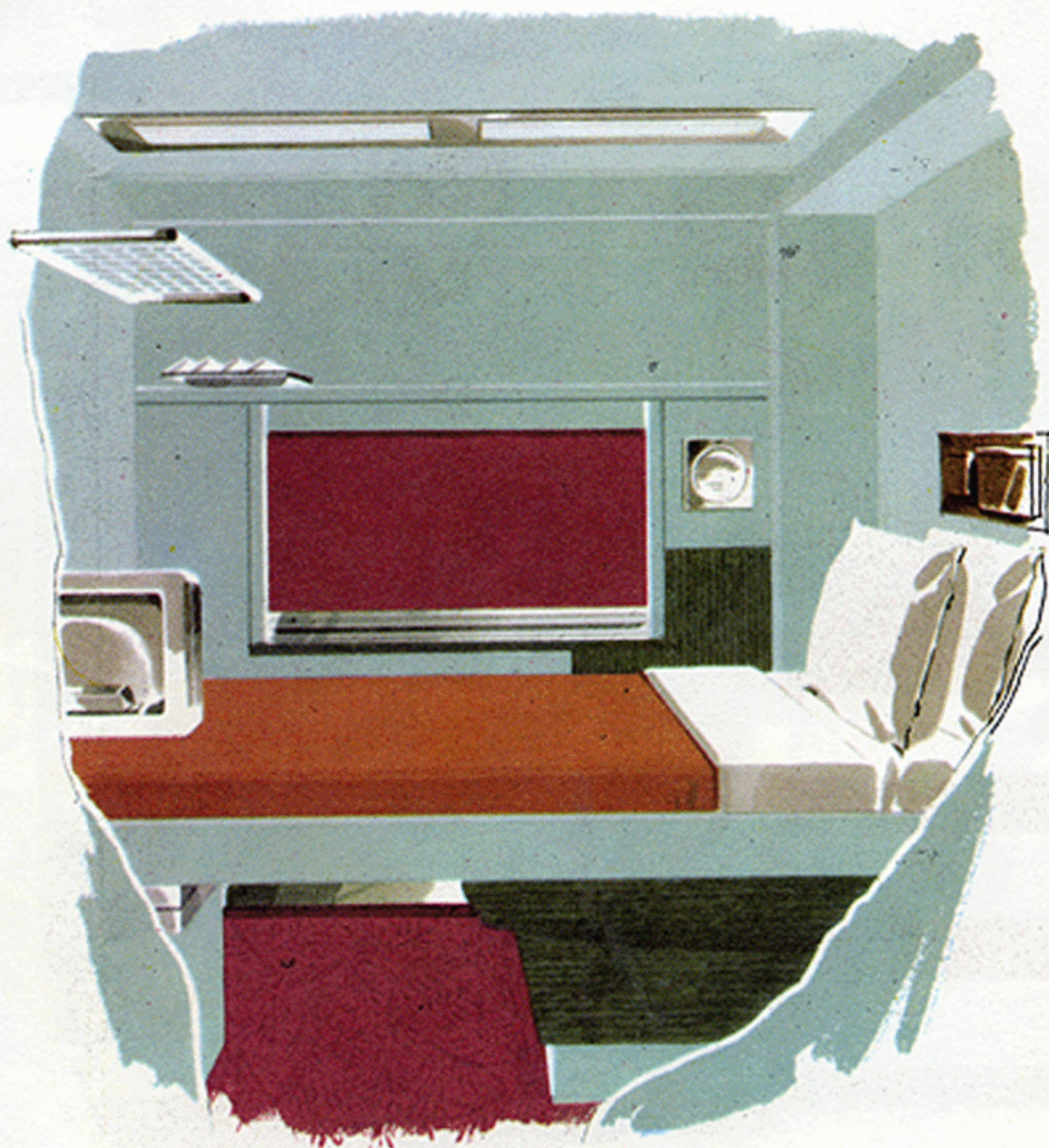
Smoking facilities are aided by efficient ventilation.

Daytime use of the Roomette finds the bed in its wall niche. The relaxing sofa seat and wide picture window enable you to view and enjoy the passing panorama in restful and solid comfort.

## Roomette

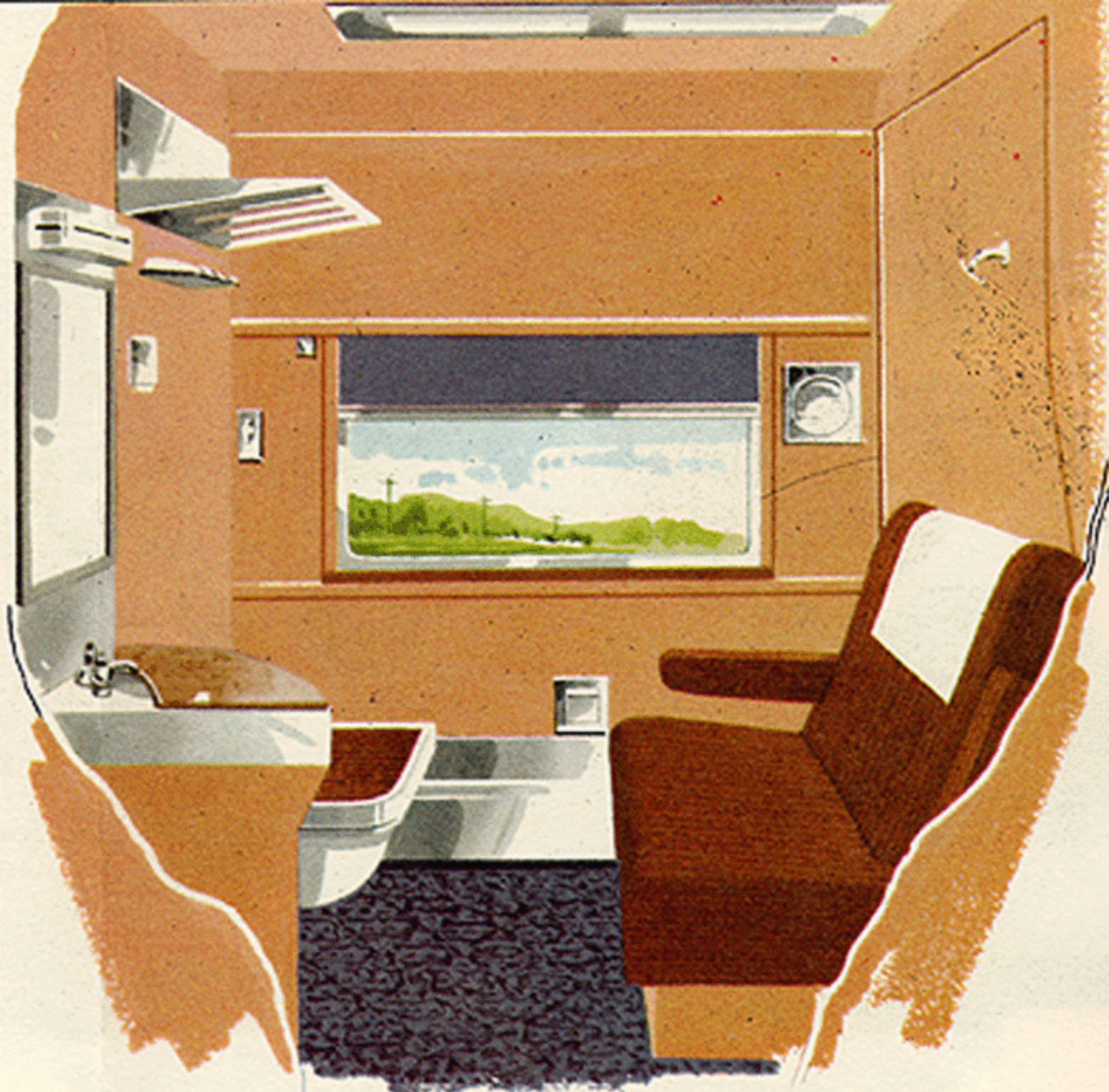
The Roomette is a completely enclosed, private room and offers more than ample space for one person. It is equipped with a premade fold-in-the-wall type bed over six feet long, a comfortable sofa seat, complete toilet facilities and individual controls for heat, lights and air conditioning. The door can be locked from the inside for complete privacy for lounging or sleeping.

At night you can lower the bed when you wish to retire, or the porter will be glad to lower it. A zipper type curtain in the doorway allows you added space for getting into or out of the bed.



# Roomette

The Roomette pictured here, also designed for single occupancy, has the front edge of the folding type bed contoured at the lower end. Complete and private toilet facilities, ample luggage space, plenty of room for lounging and dressing, chilled drinking water and individual heat, light and air conditioning controls add to your comfort and enjoyment.



Day or night you are assured of complete privacy if that should be desired. In addition to the lights for general illumination, there also are reading and mirror lights for your individual control.

The bed when lowered for night use is over six feet long. It has a sleep inviting mattress and is pre-made with two pillows, crisp clean sheets and woolen blankets.

Careful pre-making of the bed adds to restful sleep.

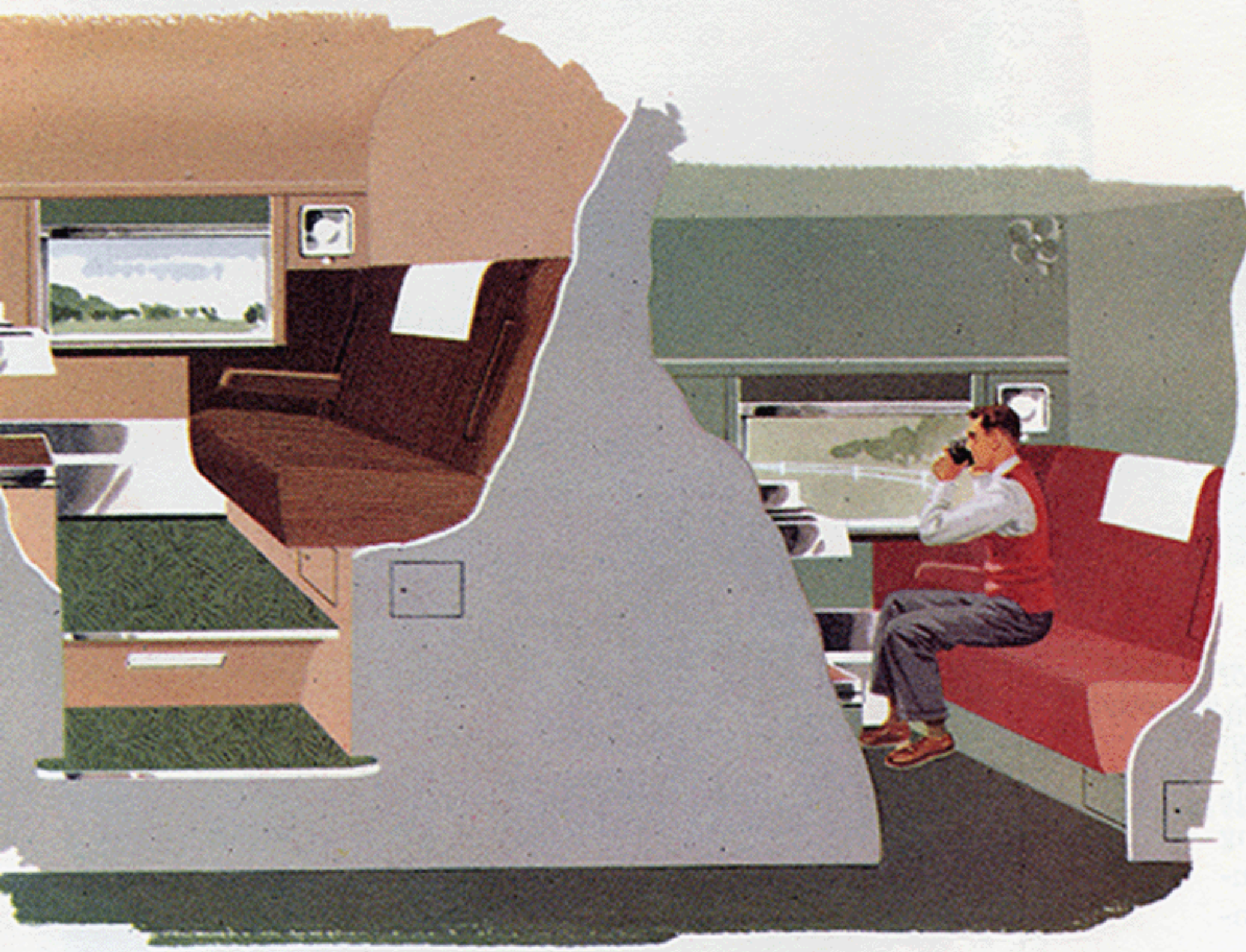


The wash basin is accessible, both day and night.



# Duplex- Roomette

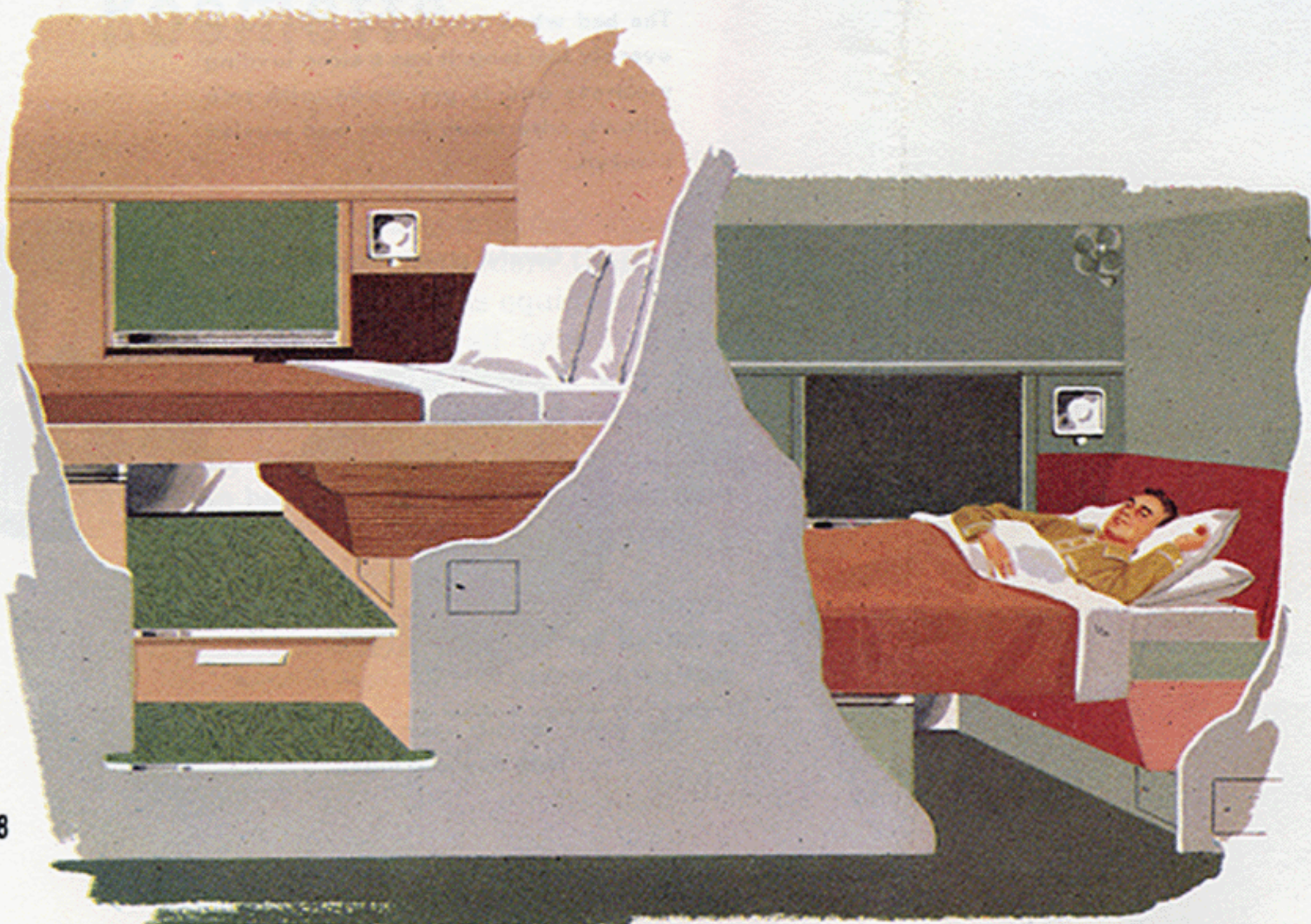
The duplex-roomette is a compact private room for use by one person. It contains complete toilet facilities and offers full privacy at a cost only slightly over that of a lower berth. Duplex-roomettes are arranged on two levels on each side of a center aisle, with the lower rooms at aisle level and the upper rooms two steps up.



Each duplex-roomette has a sliding door which may be locked. Other conveniences include a comfortable sofa seat next to a wide window, ample luggage space, cool drinking water, mirror and electric shaver outlet. The bed in the upper room is of the fold-in-the-wall type while that in the lower room slides out of its niche below the upper room.



Individual control of heat, lights and ventilation.



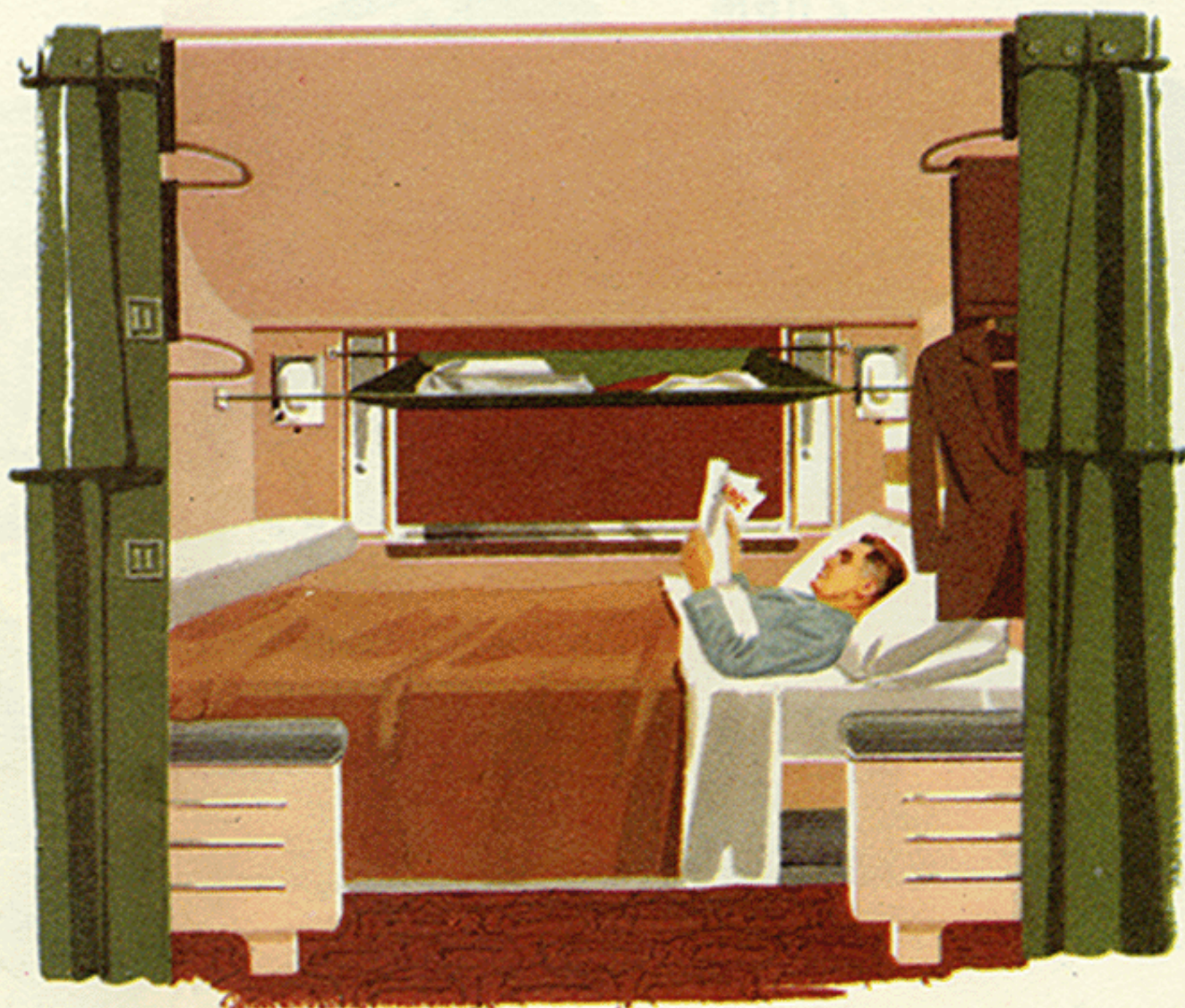
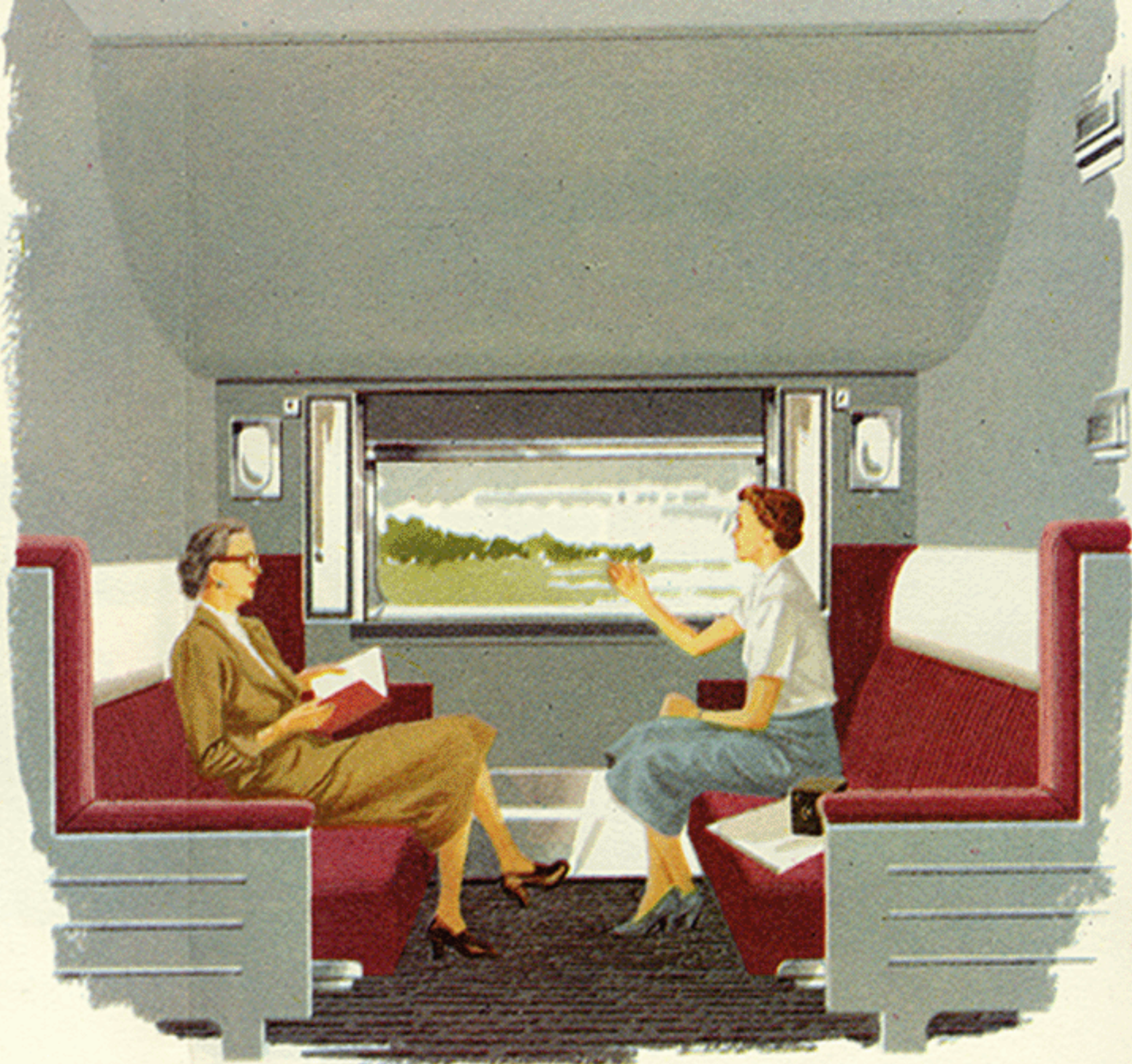
A locker for shoes to be shined by the porter.

## Section

During the daytime berth and section passengers are accommodated in comfortable sofa seats, especially suited for lounging or window gazing. Individual reading lights are provided and there is ample room for luggage and wraps. Completely equipped toilet and dressing rooms elsewhere in the car are always available.

**NOTE:** A "Section" is the space of both a lower and upper berth, but where one berth only will be prepared for night use. Where lower and upper berths within the confines of a section are purchased for separate use, the accommodations furnished will be as described and pictured on page 20.

Where a section for single occupancy is purchased the occupant has exclusive use of all of the facilities in the section, including both seats, extra luggage space and extra pillows and blankets as desired. In the use of a section in nighttime service, as pictured at the right, both the upper and lower berth mattresses are placed on the lower berth to make for more restful sleep. The upper berth is closed to provide more head room and four clothes hangers are furnished.



Stretch to  
your heart's content.