

The Pullman Company Exhibit

THE WORLD'S FAIR OF 1940 IN NEW YORK





P
E
A
C
E



UNITED STATES OF AMERICA



6.00

WELCOME

THE SPIRIT OF "WELCOME"
—a sincere hospitality inspires this message to visitors to the New York World's Fair of 1940, and the Pullman Company exhibit.

About the most modern of all civilizing arts is that of getting about the world. Its development in the last four or five generations has made this planet a community, and our own country, a neighborhood. The marvel of American development in a single century has been wrought largely because this country has led the world in building and using modern railroad highways. Not only does the United States have more than a third of the world's railway mileage, but it has

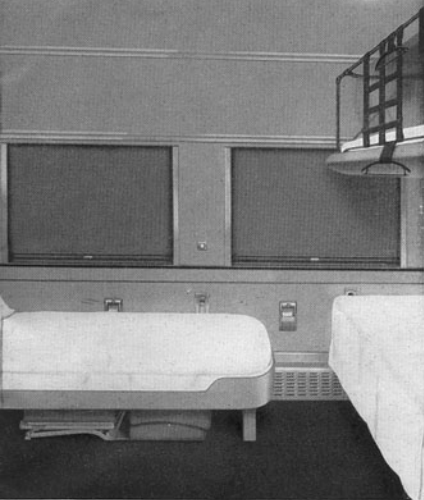
this network of ironways woven into a single, unified fabric of travel facilities through and by the service of The Pullman Company.

You are cordially invited to inspect the Pullman exhibit, to become acquainted with the high standards of travel comfort afforded through Pullman service. We are confident that your visit will produce a lasting impression of the advantages of Pullman travel.

On the following pages you will find illustrated and described the various types of accommodations and features of Pullman service displayed at the New York World's Fair, 1940. Keep this book for future reference as an aid in selecting your Pullman space the next time you travel.

We enjoy being your host, the business of transportation has become to us a pleasurable art, a profession worthy of the best that is in us. Every one in the Pullman organization knows the value of a friendly service.





Minimum railroad transportation required: for an adult—in certain parts of the United States 1½ fares; in other sections 2 rail fares; in Canada one rail fare. For two or more adults, one rail fare each. Pullman rate: in United States, for an adult or an adult and child under 5 years of age, approximately 2½ lower berth fares. In Canada: for one passenger, approximately 3 lower berth fares; for two or more passengers, approximately 3½ lower berth fares.

THE NEW DRAWING ROOM

THE NEW DRAWING ROOM radiates spaciousness. A longitudinal bed folding into one cross wall has been substituted for the former fixed couch; the section seats by the windows have been removed, with substitution of a long transverse sofa, convertible into an equally long bed (with an upper berth) along one of the cross walls of the room. The folding bed when ready for night service is at right angles to the others, extending along the window wall. All beds are 6 feet 5

inches in length and of standard width. When the room is prepared for three persons, with the two full-sized lower beds in place (and the upper also made down) there is still ample dressing space.

For day travel the wall bed disappears, the upper is put away and the third bed becomes a sofa. This leaves ample space for two comfortable, movable lounge chairs, giving a real living room effect. The chairs are folded and placed under the bed at night. There is an electric fan, individual regulation of heating and lighting. There is a large wardrobe; storage space above the annex for luggage, with additional pieces going under the sofa, and a shoebox on the passageway. The lighting is designed to meet all illumination requirements.



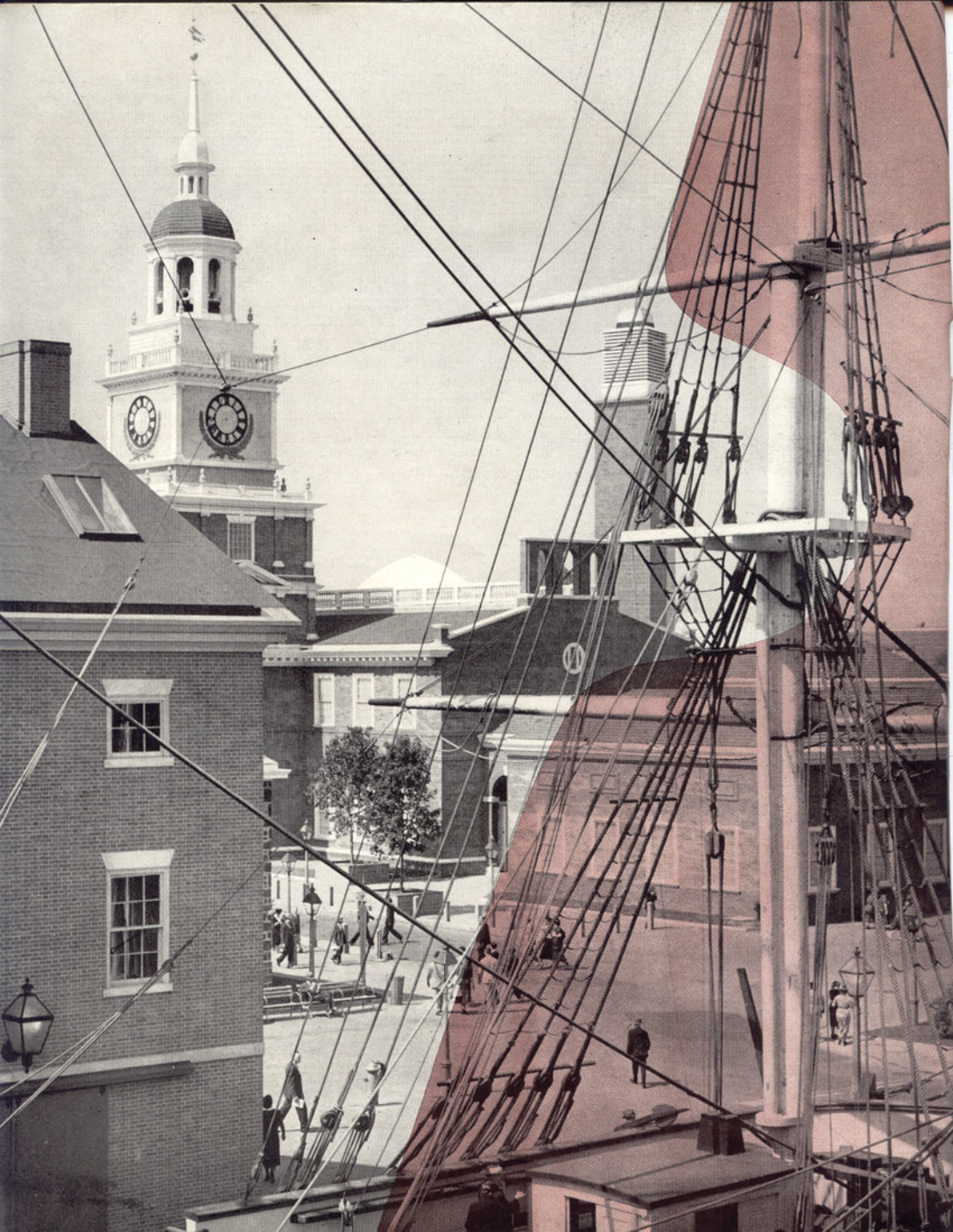
Minimum railroad transportation required: for an adult—in certain parts of the United States and in Canada, only one rail fare; in other sections of the United States 1½ or 1½ rail fares. For two or more adults, one rail ticket each. Pullman rate: for one adult or one adult and child under 5 years of age, approximately two lower berth fares; for two or more adults, approximately 2½ lower berth fares. In Canada: for one passenger, 2½ lower berth fares; for two or more passengers, 2½ lower berth fares.

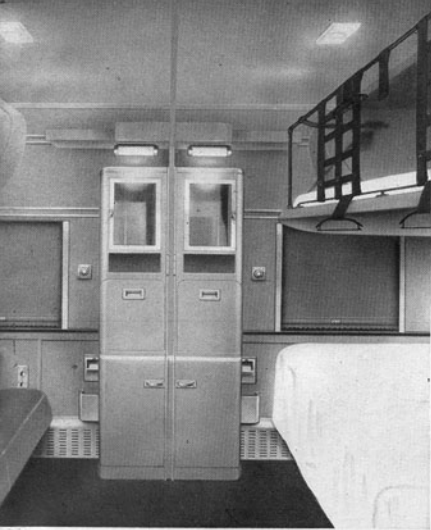
THE NEW COMPARTMENT

ADDED COMFORTS and conveniences are included in the NEW COMPARTMENT through rearrangement of the facilities. Gone are the section seats by the windows, replaced by a transverse sofa affording ample lounging space. The upper berth remains above the window, and is at right angles to the convertible sofa-bed. There is space between the sofa and the opposite wall for a comfortable chair. At

night the chair is placed under the upper berth where it is still available for lounging and reading. Occupants are therefore provided during the day with a comfortable sofa and also an easy chair. Both beds are 6 feet 5 inches in length and of standard width.

THE NEW COMPARTMENT has an electric fan, individual regulation of the lighting and ventilation, and thermostatic heat control. Each compartment is provided with complete toilet facilities, a locker for clothes, a shoebox, and there is plenty of space for luggage. Air-conditioning applies to each compartment. For daytime travel there is ample room to seat four passengers comfortably. At night there is a comfortable bed and upper berth, affording the finest in sleeping accommodations.





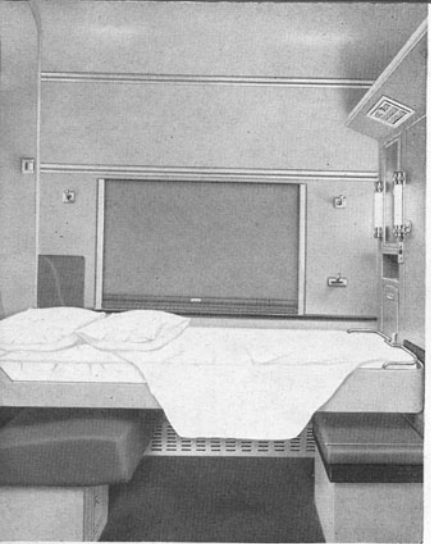
Minimum railroad transportation required: for an adult—one rail fare. Pullman rate: for one adult or one adult and child under 5 years of age, approximately 1½ lower berth rates; for two adults approximately twice the lower berth rate. In Canada: for one passenger, 2 lower berth fares; for two passengers approximately 2½ lower berth fares. **BEDROOM SUITE:** Two bedrooms en suite. Railroad transportation required: for two or more passengers, one rail ticket each. Pullman rate: the price of two bedrooms not to exceed the cost of a drawing room.

THE DOUBLE BEDROOM

The **DOUBLE BEDROOM** is an enclosed private room, and contains a wide, comfortable sofa. For night time use this sofa forms a luxurious bed 6 feet 5 inches long. Above the sofa is an upper berth which similarly makes down into a bed. The bedroom has a private toilet which folds into a cabinet when not in use; also a folding wash basin. A hinged desk provides a writing table as well as a service ta-

ble for meals. The room is provided with electric lights, separate heat control, an adjustable ventilator in the door and exhaust fans—all of which allow the occupant to regulate room temperature to suit his desire. Each room is separately air-conditioned. There is ample room for luggage space beneath the sofa and in a luggage rack. A vacuum bottle for ice water is included as well as clothes hooks and a full length mirror.

Some of the bedrooms are separated by a folding partition that permits the rooms to be kept as individual units, or can be opened to afford the convenience of one large room where a table can be set and a meal enjoyed in comfort and privacy. Family groups find this a convenient way to travel.



Railroad transportation required: for an adult—one rail fare. Pullman rate for the **ROOMETTE:** for one adult or one adult and child under 5 years of age, approximately 1½ lower berth rates.

THE ROOMETTE

HERE IS THE "ROOMETTE," a completely enclosed, private room containing one bed. In the daytime the bed folds into the wall at one end of the room and the passenger has a comfortable sofa seat with ample space for lounging, or for undressing before the bed is lowered for the night time arrangement. For dressing the passenger can make the whole room space and its complete toilet facilities available by returning the bed to its niche in the wall. The bed is easily raised or lowered.

The door of the "ROOMETTE" can be locked at night, or left open and a curtain drawn across the opening.

Pullman magic produces such conveniences as individual regulation of ventilation, heat and light; complete toilet facilities, with washstand folding into one wall, and above it a mirrored cabinet for toilet articles, with tubular lights on each side; a locker in which to hang clothes; a rack for luggage; a vacuum water bottle in cabinet, and a box from which the porter removes shoes without disturbing the sleeper. Ceiling and reading lights of new design provide ample illumination. One daytime convenience is a movable footrest, available if desired. It offers the ideal accommodation for one passenger. The "ROOMETTE" is completely air-conditioned and the window is extra wide—grand for viewing. The sleep-inviting bed is especially attractive, being 6 feet 5 inches long.



THE CONVERTIBLE SINGLE OCCUPANCY SECTION

IN STANDARD car service the SINGLE OCCUPANCY SECTION has been improved by the addition of an ingenious device, simple to operate, which permits half your bed to be folded upward to a vertical position, leaving the cleared space available for dressing. When ready to retire, you merely unhook a cord and lower the bed. If you like, the porter can do this for you, outside the curtain. In the morning, you merely fold half the bed up again and secure it with the hook, or ring for the porter to pull it up with the cord. The additional dressing space increases the

value of the section space, whether used by one or two persons. The folding device does not affect the sleep-inviting softness of the Pullman bed.

Your section is furnished with electric lights, shelf for luggage, hammock for clothes, hangers, and electric bell with which to summon porter at any hour. With the upper pushed up, the traveler has 6 feet $2\frac{3}{4}$ inches of additional space in which to undress, and dress and make his preliminary toilet. The length of the bed between head boards is 6 feet, 2 inches, and the width 35 inches. Under the bed is space for baggage, for suitcases 9 inches high by $28\frac{1}{2}$ inches long. By day, the occupant of a section is entitled to the exclusive use of both seats for lounging purposes or for luggage.

Minimum rail requirement—one adult ticket. Pullman charge: for section for one passenger or one passenger and child under 12 years of age—1½ lower berth rates, or you can have the section for the night alone if the upper has not been sold, by paying the conductor not more than \$1.20 over the lower berth rate.

LOWER BERTH

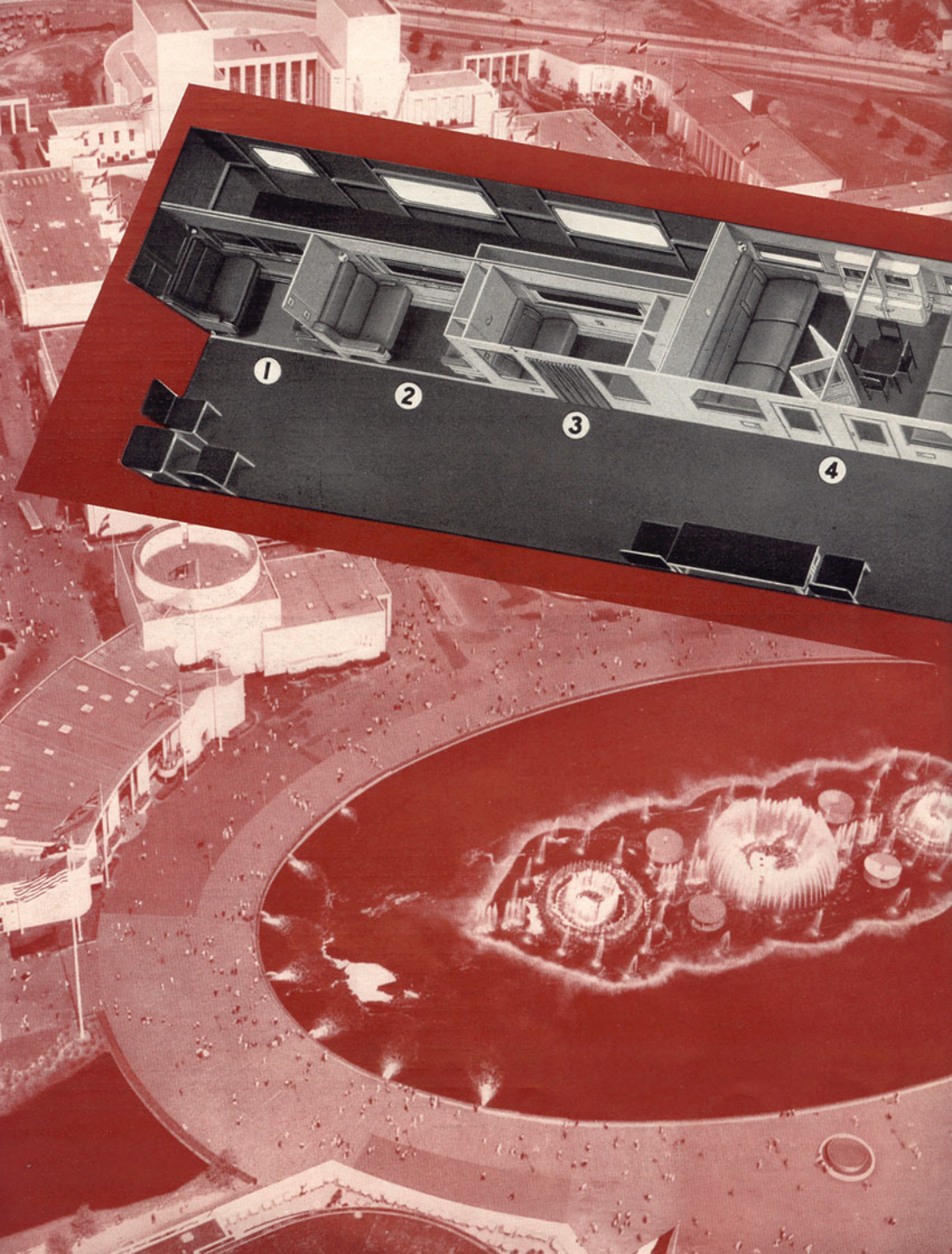
For daytime travel the passenger holding the lower berth is entitled to the seat facing forward; each seat contains ample room for two passengers. Porter will install sturdy table for writing or for games, if desired.

A LOWER BERTH is furnished with electric lights, shelf for luggage, hammock for clothes, hangers for your clothes, and electric bell with which to summon porter at any hour. The spring mattress has $6\frac{1}{2}$ pounds of the finest horsehair, is $4\frac{1}{2}$ inches thick. Each of the two pillows contains the finest goosefeathers obtainable. The length of the bed between head boards is 6 feet, 2 inches, and its width 35 inches. Under the bed is baggage space for suitcases not to exceed 9 by $28\frac{1}{2}$ inches.

At night, the lower accommodates one or two adults. In the daytime two large windows provide ample opportunity to view the passing scenery. At night there are lights for reading after retiring. Heavy curtains can be securely fastened from the inside to afford complete privacy. It has been truly said of the lower berth, "No finer bed courts sleep anywhere."

Whatever the accommodations, Pullman attempts always to bring to every traveler the comforts and conveniences to which he is accustomed at home.

Railroad transportation required: for an adult—1 rail ticket; for a child occupying lower berth alone—and under 12 years of age)—one-half fare rail ticket. The Pullman charge for a lower berth depends, of course, upon your destination, and is the basis for the charges of all other accommodations.



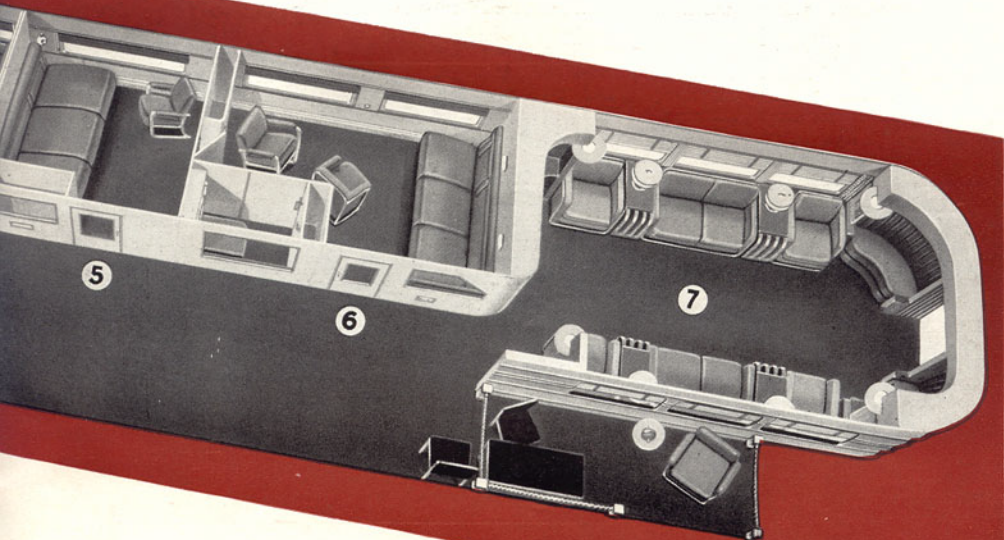
1

2

3

4

1. TOURIST SECTION
2. CONVERTIBLE SINGLE OCCUPANCY SECTION
3. ROOMETTE
4. CONNECTING DOUBLE BEDROOMS
5. NEW COMPARTMENT
6. NEW DRAWING ROOM, AND
7. LOUNGE-OBSERVATION



THE PULLMAN PROGRESS EXHIBIT

The ACCOMMODATIONS and services offered by the Pullman Company today are indeed a far cry from those offered over eighty years ago. However, one thing has remained unchanged throughout the years.

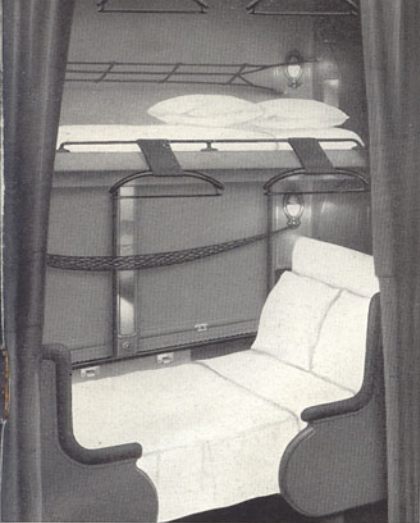
Pullman began with making transportation comfortable, combined with a courteous and friendly service—and has steadfastly adhered to that ideal. It is recognized as the accepted mode of travel. The Pullman car is the yardstick of safety in transportation. A transportation company, to be successful, must dedicate itself to a beneficial purpose and so the Pullman Company

has dedicated its efforts to the comfort, convenience and safety of the traveling American Public.

Today Pullman brings to the New York World's Fair, 1940, an exhibit of its latest and finest in travel accommodations. A study of the evolution of today's Pullman accommodations would embrace all the arts and sciences of modern transportation.

The exhibit demonstrates a modern Pullman service—the best that Pullman ingenuity can develop in creature-comforts. It is the answer to the challenger's bid for today's travel business.





TOURIST CLASS ACCOMMODATIONS

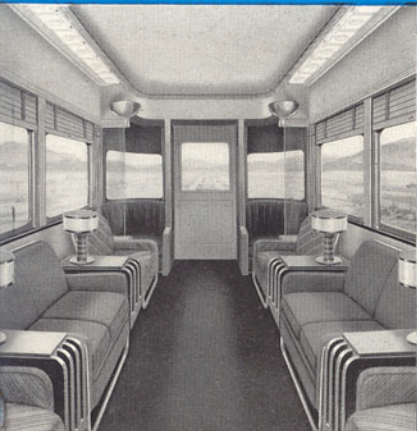
THE TOURIST upper berth provides a comfortable bed, over 6 feet in length and 35 inches wide. There is a flexible shelf to hold luggage or clothing, and hanger for your clothes and an electric bell to summon the porter at any hour. The upper has a horsehair mattress with spring base, 2 pillows, blankets and sheets. For daytime travel the

seat contains ample room for two passengers.

The TOURIST lower berth is 6 feet, 2 inches long, furnished with electric lights, shelf for luggage, hammock for clothes and an electric bell to summon the porter. There is a fine hair mattress with spring base, 2 pillows, blankets and sheets. Under the bed is baggage space for suitcases. For daytime travel the passenger holding lower berth space is entitled to the seat facing forward. Each seat contains ample room for two passengers, the lower berth passenger occupying the seat facing forward.

The TOURIST sleeping car is operated over some lines and between certain points in western territory, defined in a general way as between the Twin Cities, Chicago, St. Louis, Kansas City, New Orleans, and the Pacific coast.

Railroad transportation required for upper or lower TOURIST berth: for an adult—one rail fare of the class acceptable in tourist cars; for a child—(under 12 years of age)—one-half fare rail ticket. The price of TOURIST accommodations is lower than that for standard upper and lower berths. The charge for the lower depends upon the points of service, and the price of the upper berth is between 75% and 80% of the lower berth rate.



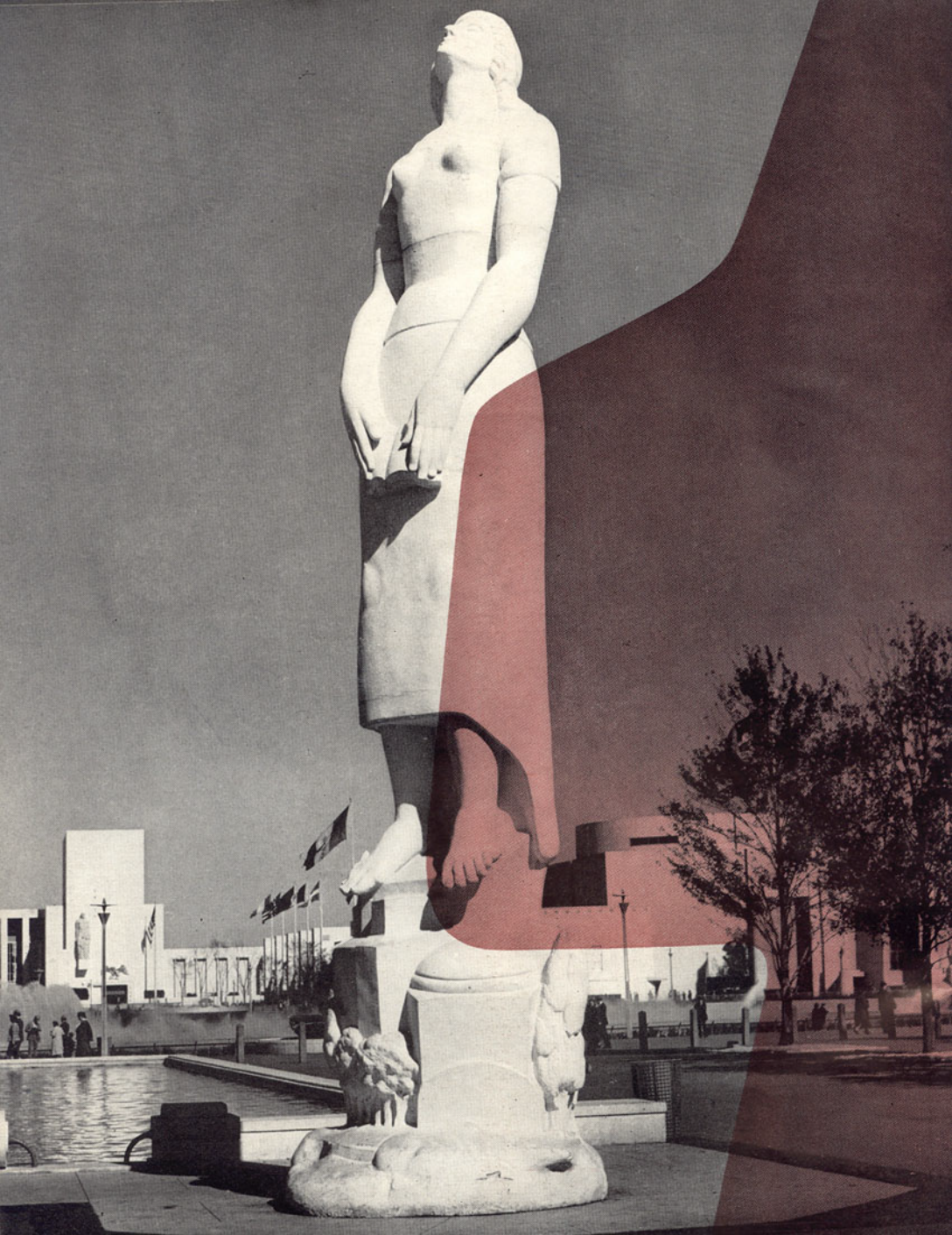
THE OBSERVATION LOUNGE CAR

THE PULLMAN LOUNGE CAR is a characteristic Pullman contribution to the ease of travel, carrying forward principles formulated 80 years ago, when Pullman set out to add to rail travel, a degree of comfort then unknown. This car is ideal for complete relaxation, and creates an inviting atmosphere of sociability in travel. In some instances buffet service is available in a portion of the car. Comfort reaches an appreciable new level in this distinctive Pullman accommodation in discriminating and excellent taste.

The Observation Lounge Car has been likened to the solarium of a well-appointed home. This car is equipped with wide, clear windows and an open observation platform or sun room at the rear where the passenger may view the scenery. The

car is well lighted, air-conditioned and provides an easy, informal atmosphere for Pullman travelers. Writing facilities are provided, together with magazines, smoking stands and table lamps, all designed to make traveling a more enjoyable experience. In some instances radios have been installed.

Examining precedent with a critical eye, rejecting what was merely the best idea at the time, retaining proved engineering principles, Pullman created the new type observation car to synchronize with the times. It is distinctly a new experience to occasional travelers to walk into a modern Pullman observation car for the first time. The initial impression is one of intense daylight, due to the generous size of the windows. Coupled with fashionable furnishings and their quiet taste, this spacious, well-lighted car reminds one of a bright, airy solarium or sun-deck; a place for play, for rest, for pleasurable hours, for real comfort in travel.





A PULLMAN CAPTAIN AND HIS CREW

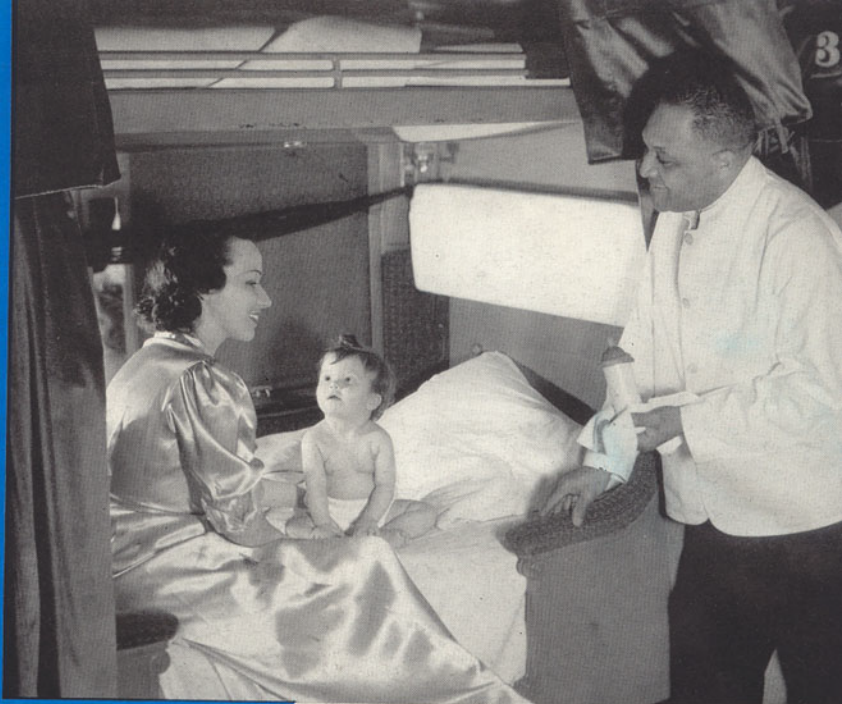
PULLMAN SERVICE

GRACIOUS HOSPITALITY is the pattern of Pullman service. The ideal of hospitality is the art of making one's guests feel "at home," by doing everything possible to make them comfortable and happy. It is this art that constitutes an ingrained part of Pullman service. As you travel in a Pullman car, you will have the conveniences and comforts experienced in daily living to which you are accustomed at home, at your command. There are no mysteries surrounding the acceptance of Pullman service as a medium of travel, its services are available to all who seek or know the better way to go.

A VARIETY OF SERVICES

Pullman service is available throughout the United States and on lines in Canada and Mexico. Wherever you buy your railroad ticket, you will find it possible to obtain a Pullman ticket, or the ticket agent can arrange to reserve your space.

Passengers occupying any type of Pullman accommodation are afforded a variety of services. Pullman provides a splendidly equipped boudoir-dressing room for women travelers, and a well-appointed dressing room for men. A Pullman passenger on trains carrying a lounge car or observation car is entitled to the use of



PULLMAN SERVICE

these cars, in standard service, and their luxurious equipment (comfortable sofas and chairs, tables, magazines, writing facilities) without any charge.

FOR YOUR CONVENIENCE

All types of Pullman accommodations are equipped with specially-designed slots into which a Pullman table can be securely fastened. If you wish, the porter will bring you one of these wide, sturdy tables, for writing, playing games, sewing, reading, and for the service of meals. On some trains the Porter will supply a list of drinks available (lemonade, orangeade, ginger ale and so forth), and these drinks will be served to you either on the table in your accommodation, or in the lounge or observation car. Cigarettes, candy, and playing cards may also be purchased through the porter on most trains. In every Pullman car is The Hotel Red Book, listing all hotels, with their types of service and their rates. Railroad folders, containing time tables, are also provided.

Telegrams may be sent and received while you are traveling. (The porter will supply telegram blanks, and will take care of the sending of your telegrams. If you expect a telegram en route, notify the Pullman conductor or porter, giving your name, car and accommo-



PULLMAN SERVICE

dation numbers.) For passengers in sleeping cars, the porter will supply pillows for daytime travel-comfort. All Pullman cars are equipped with a first aid kit. Toilet articles and other travel requisites are available on some trains. All new cars equipped with facilities for the use of electric razors, and converters for the use of such razors are being installed in other cars as rapidly as practical operating conditions will permit. All Pullman cars are equipped with a water cooler and individual drinking cups.

When making reservation for "Pullman" space, ascertain definitely that the particular type of accommodation you desire is available on the train selected for your journey.

AIR CONDITIONING

The Pullman Company pioneered in the field of air-conditioning. The first air-conditioned Pullman sleeping car was put into service September 9, 1929, and was the forerunner of more than 4,800 air-conditioned Pullman cars in service today. The air-conditioning system installed on Pullman cars functions throughout the year, and although its effects are most obvious in the summer time, it is likewise beneficial when the cooling system is not required.



PULLMAN SERVICE

FOR CHILDREN

For the children bring along a little book, a new game or puzzle or toy. The porter will set up an excellent play table in your accommodation.

For babies that have to be fed from the bottle, bring bottles and food. If your journey is to be a short one, you can prepare the food before leaving home. If your journey is to be a longer one the chef on through dining cars will prepare the formula.

THE PULLMAN PORTER

The Pullman porter in your car will serve you courteously, cheerfully, efficiently. Do not hesitate to ask him for any service in line with his duties, or information you wish. A porter will be on duty at all hours of the day and night. Pullman porters are a group of trained and disciplined men chosen with great care, for their excellent qualifications to perform their duties.

THE PULLMAN CONDUCTOR

The Pullman conductor on the train, charged with the supervision of the service, is interested in your comfort and convenience, and, if you wish, will answer any questions that you may ask concerning your trip.

